

PLAN OF PROPOSED SUBDIVISION

OF ALL OF
N.W. ¼ SEC.33-TWP.49-RGE.27-W.3Mer.
R.M. of WILTON No. 472

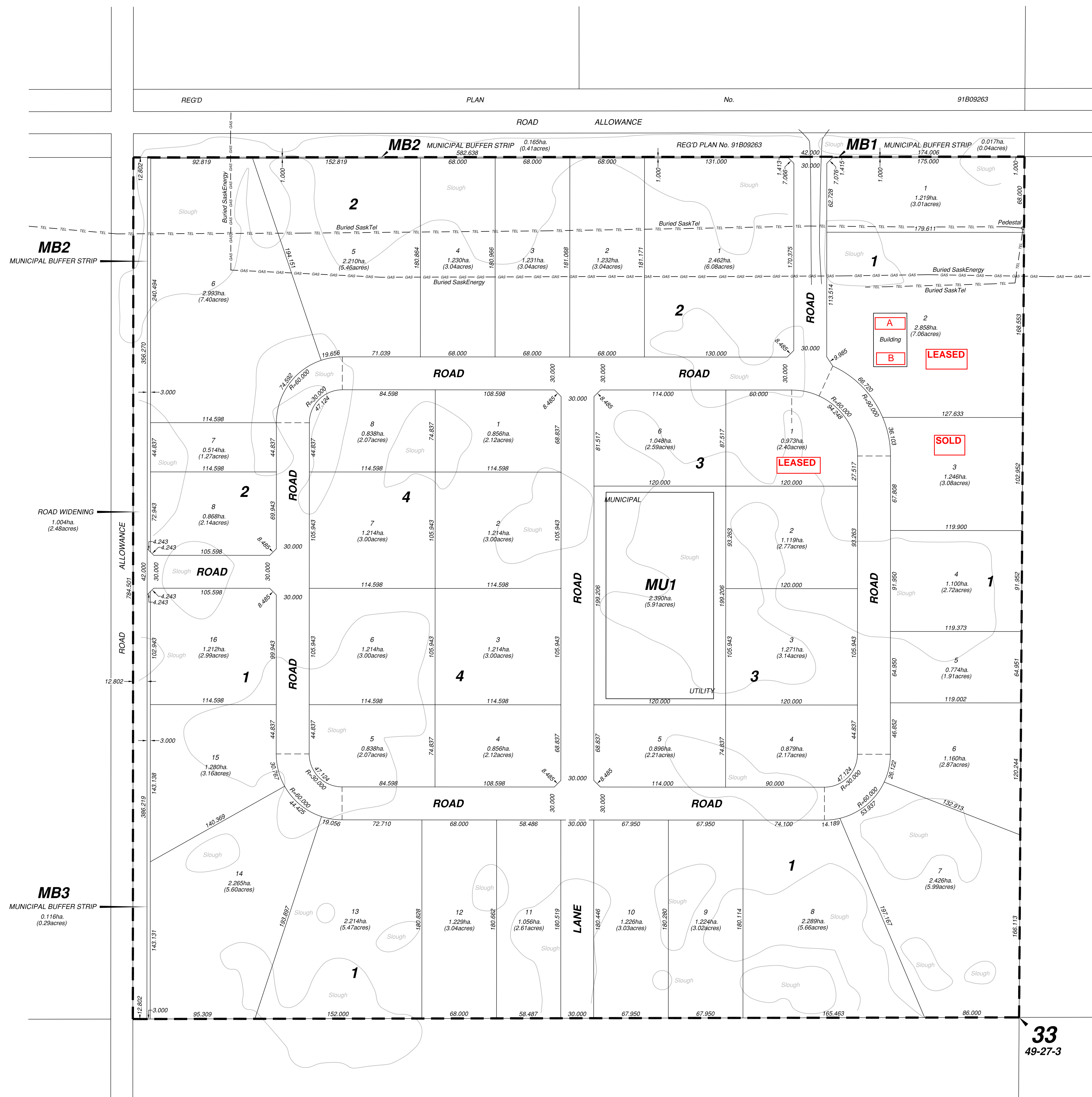
2013

SCALE 1:2000

NOTE:

MEASUREMENTS ARE IN METRES AND DECIMALS THEREOF. MERIDIAN SURVEYS (ALTA) LTD. MAKES NO GUARANTEE AS TO THE EXACT LOCATION OF THE UNDERGROUND FACILITIES SHOWN. THE LOCATION OF UNDERGROUND FACILITIES MUST BE VERIFIED BY THE OWNER OF THE SAID FACILITIES PRIOR TO ANY CONSTRUCTION ACTIVITIES.

AREA REQ'D WITHIN N.W.¼ SEC.33-TWP.49-RGE.27-W.3Mer. = 63.451ha.(156.79acres)



Ministry of Municipal Affairs
 Community Planning Branch
 Approval

33
 49-27-3